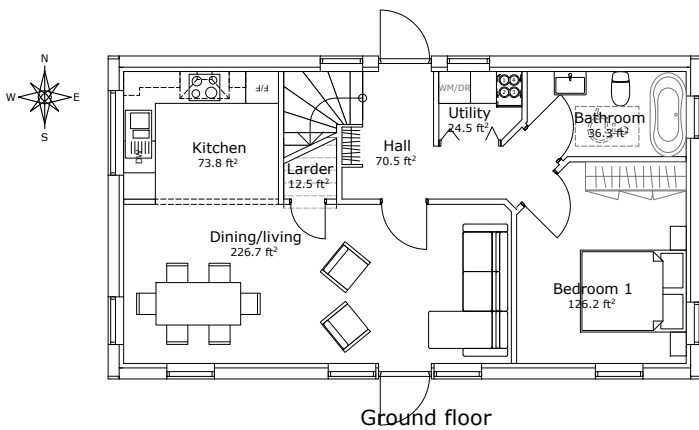


Passive House
($U_{wall}=0.15 \text{ W/m}^2\text{K}$, $U_{roof}=0.10 \text{ W/m}^2\text{K}$)

1076.4 ft²
(Gross Internal Area)

drawing not to scale



Internal dimensions: 18.7 ft x 34.8 ft
External dimensions: 20.0 ft x 36.8 ft

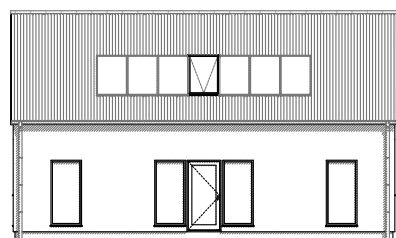
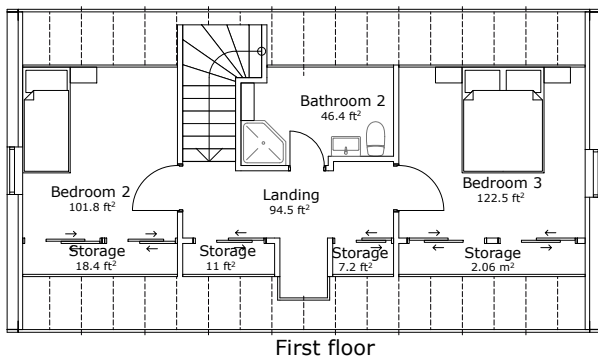
This model has the same width as the Atlantica 41 but is 3.6m longer and has a converted attic with a 45° roof pitch.

It is a great house size for a small to medium family, especially where planning regulations require for a narrow bodied building shape.

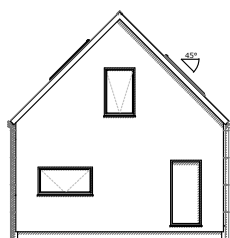
As an optional feature, the roof could be lifted a bit to allow for greater head height upstairs.

The house could also have a tiled roof and white plaster finish.

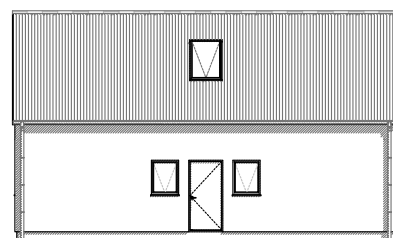
The design allows for 3 bedrooms.



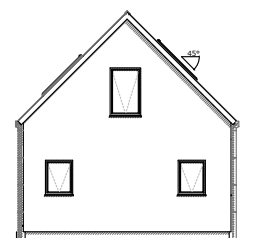
South elevation



West elevation



North elevation



East elevation