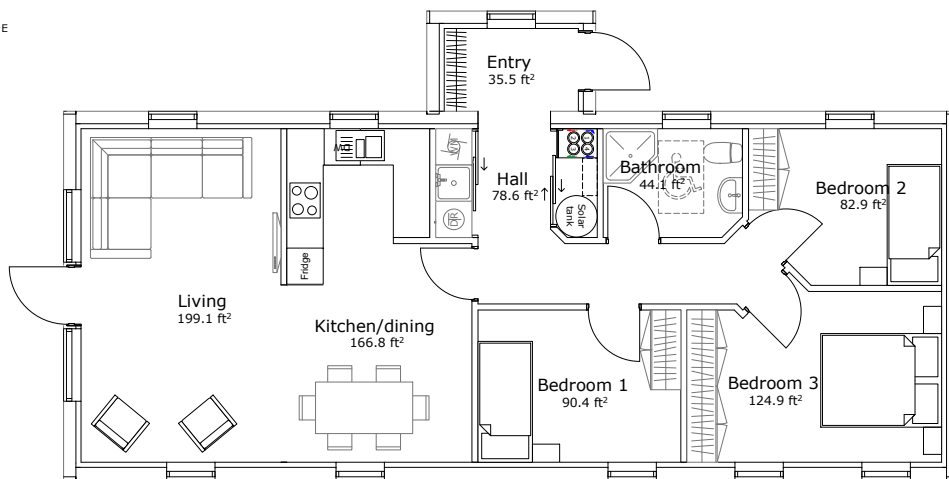


Passive House
($U_{wall}=0.15 \text{ W/m}^2\text{K}$, $U_{roof}=0.10 \text{ W/m}^2\text{K}$)

850.3 ft²
(Gross Internal Area)

drawing not to scale



Internal dimensions: 18.0 ft x 46.6 ft
External dimensions: 20.0 ft x 48.6 ft

This Atlantica example is designed as single storey but has a roof pitch of 35°.

It contains barged gables making it fit perfectly into the Irish landscape. The West facing more modern looking windows allow plenty of light into the living areas. The design allows for 3 bedrooms.

