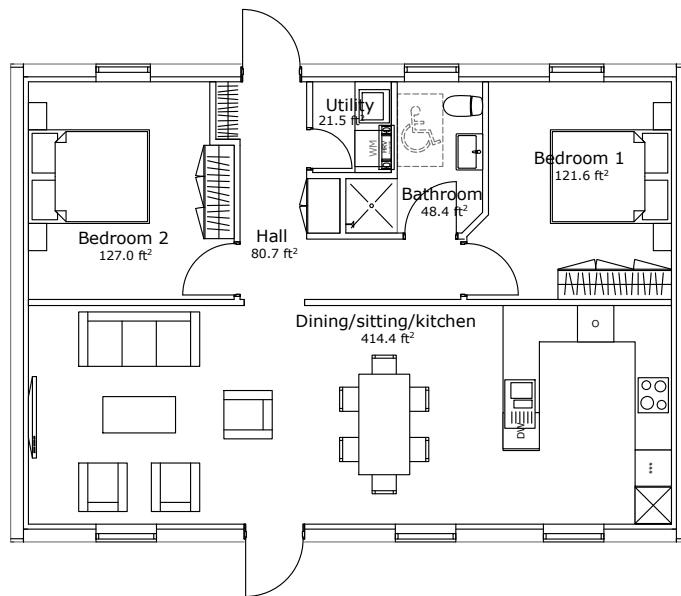


Passive House
($U_{wall}=0.15 \text{ W/m}^2\text{K}$, $U_{roof}=0.10 \text{ W/m}^2\text{K}$)

839.6 ft²
(Gross Internal Area)

drawing not to scale

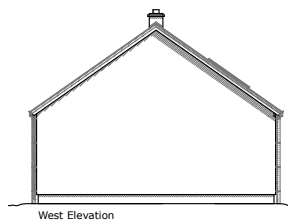


Internal dimensions: 24.0 ft x 34.8 ft
External dimensions: 25.9 ft x 36.7 ft

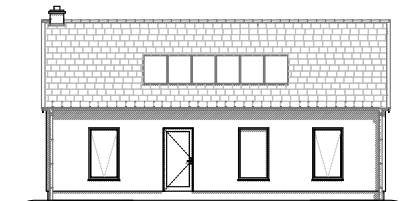
This single storey Baltica example has a roof pitch of 35°.

It contains a short roof giving it a modern & traditionally Irish look. This version uses a standard passive upgrade.

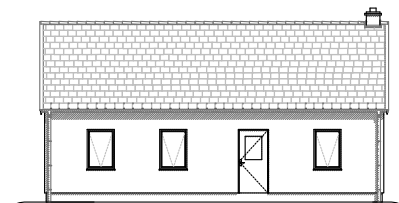
The design allows for 2 bedrooms.



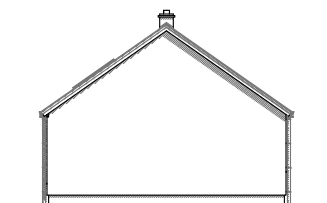
West Elevation



South Elevation



North Elevation



East Elevation