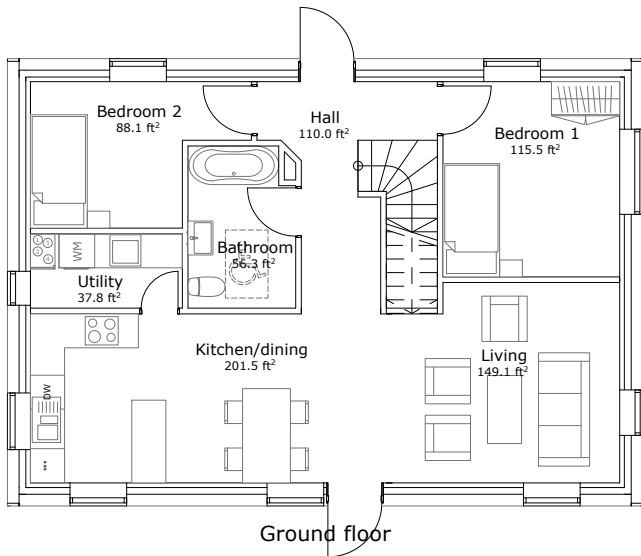


Passive House
($U_{wall}=0.15 \text{ W/m}^2\text{K}$, $U_{roof}=0.10 \text{ W/m}^2\text{K}$)

1388.5 ft²
(Gross Internal Area)

drawing not to scale



Internal dimensions: 23.3 ft x 34.1 ft
External dimensions: 25.9 ft x 36.7 ft

This Baltica example has a maximized roof pitch of 45° and a converted attic.

It contains a short roof giving it a modern look. Both sides of the roof have a dormer extension to maximize the usable space in the attic and give the bathroom and the family area a full height ceiling.

The design allows for 5 bedrooms.

