

☑ Super Passive House

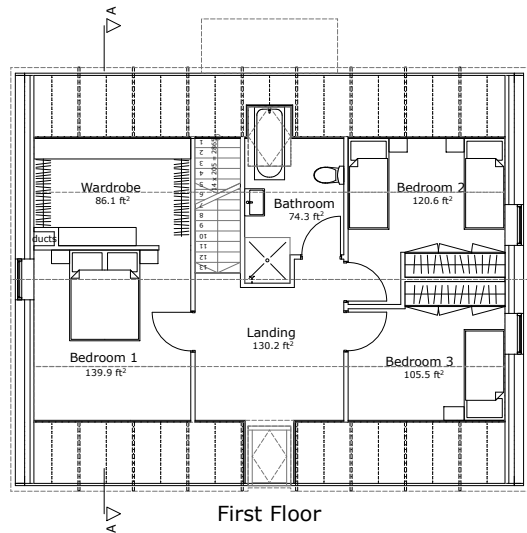
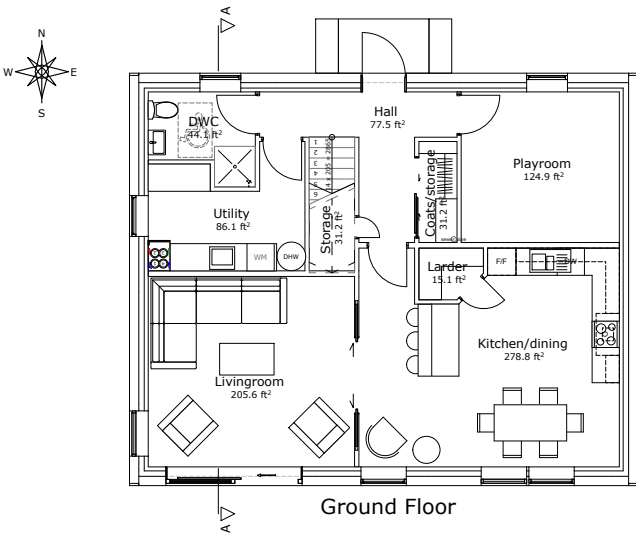
( $U_{wall}=0.10 \text{ W/m}^2\text{K}$ ,  $U_{roof}=0.08 \text{ W/m}^2\text{K}$ )

## 1614.6 ft<sup>2</sup>

(Gross Internal Area)

## Nordica Series

*drawing not to scale*



Internal dimensions: 27.6 ft x 34.5 ft  
External dimensions: 29.9 ft x 36.8 ft

This is our best selling house model. Since our first construction in 1993 we built nearly 80 of this type in all sort of variations. Due to its good wall to floor area ratio this is an ideal size for passive performance.

**Raised wall**

This house has our raised wall feature with a more spacious upstairs.

This featured design allows for 3 bedrooms and one playroom.

