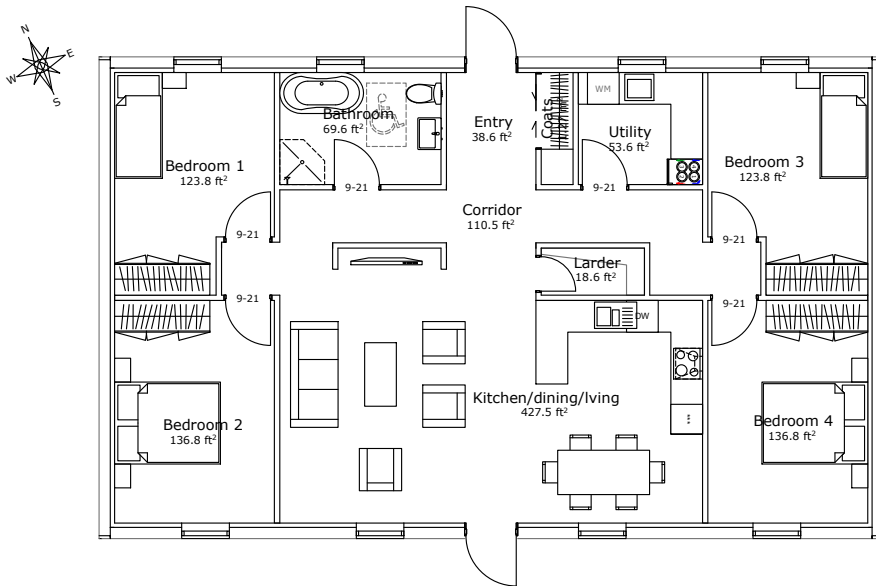


Passive House
($U_{wall}=0.15 \text{ W/m}^2\text{K}$, $U_{roof}=0.10 \text{ W/m}^2\text{K}$)

1302.4 ft²
(Gross Internal Area)

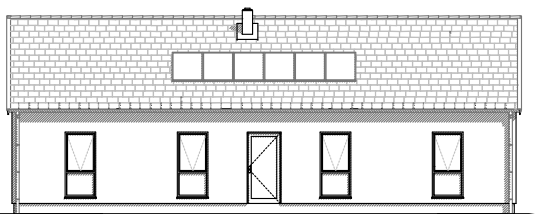
drawing not to scale



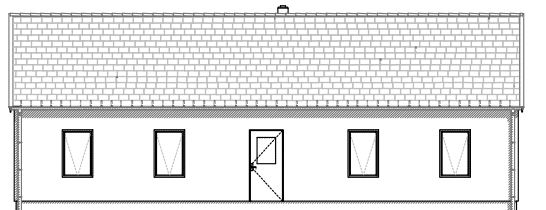
Internal dimensions: 27.9 ft x 46.6 ft
External dimensions: 29.9 ft x 48.6 ft

This is a single storey version of our widely popular model of the Nordica Series. This version has the bedrooms to each side and living room with kitchen and dining in the centre. To keep the living areas feel more open plan there is no wall between the western bedrooms, but this could potentially be added easily.

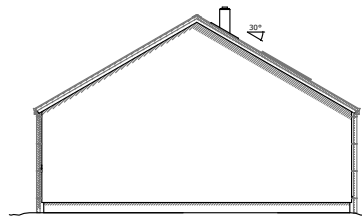
This featured design allows for 4 bedrooms.



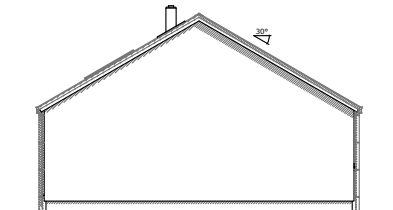
South Elevation



North Elevation



West Elevation



East Elevation