

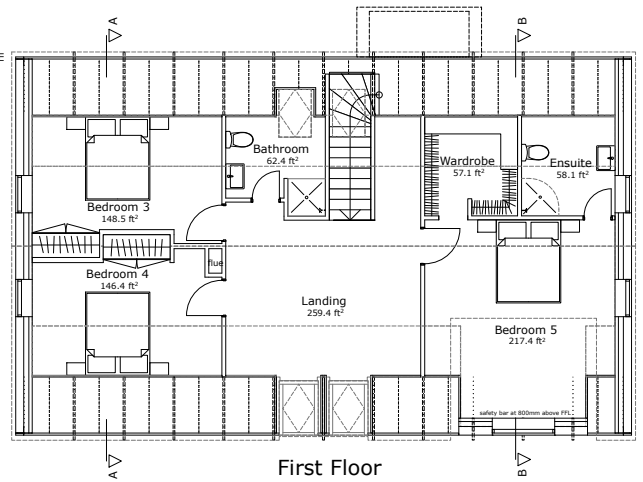
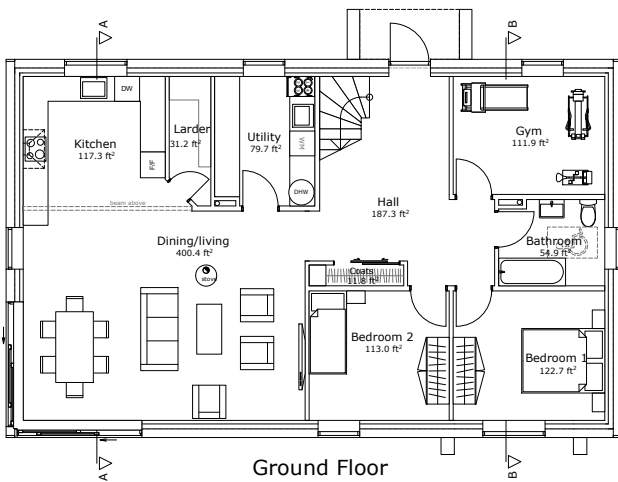
☑ Super Passive House

( $U_{wall}=0.10 \text{ W/m}^2\text{K}$ ,  $U_{roof}=0.08 \text{ W/m}^2\text{K}$ )

### 2238.9 ft<sup>2</sup>

(Gross Internal Area)

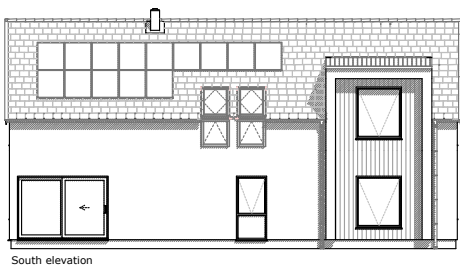
*drawing not to scale*



Internal dimensions: 27.9 ft x 49.6 ft  
External dimensions: 29.9 ft x 48.6 ft

**Raised wall**

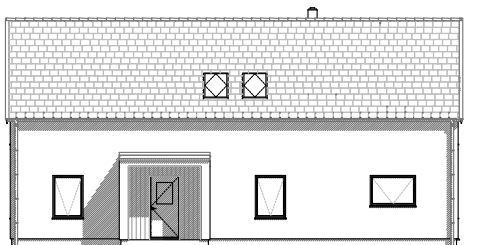
This house has our raised wall feature with a more spacious upstairs.



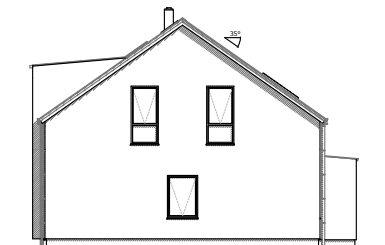
South elevation

This is our latest and most contemporary design. It has also been a widely popular model. With almost 30 built, this is ideal for larger families. This version has two generous sliding doors at the corner. The master bedroom upstairs has a dormer window feature that increases the quality of the room dramatically. And there is an open porch added to the entrance door to protect from wind and rain.

This featured design allows for 5 bedrooms and 1 gym.



North elevation



East elevation



West elevation