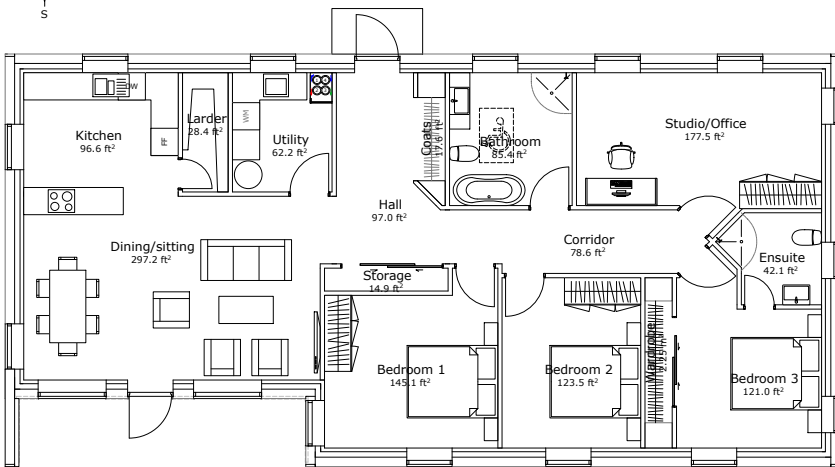


☑ Super Passive House
($U_{wall}=0.10 \text{ W/m}^2\text{K}$, $U_{roof}=0.08 \text{ W/m}^2\text{K}$)

1463.9 ft²
(Gross Internal Area)

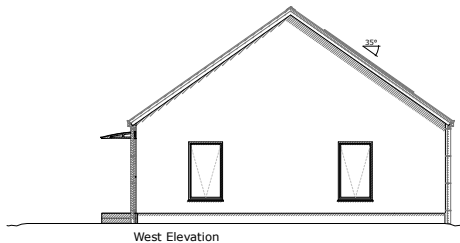
drawing not to scale



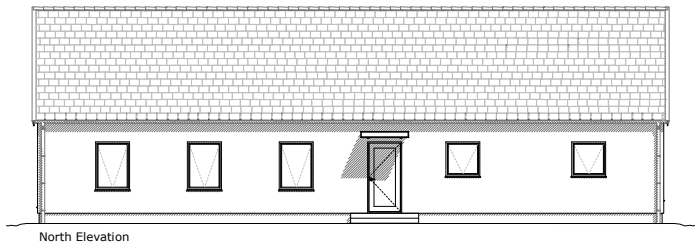
Internal dimensions: 27.9 ft x 58.4 ft
External dimensions: 29.9 ft x 60.4 ft

This large single storey house with a 35° roof pitch contains an open plan kitchen-dining-living area with generous full height glazing. The extra deep set-back not only provides good shading in summer but also makes for a nice outside sitting area, especially with an attached deck.

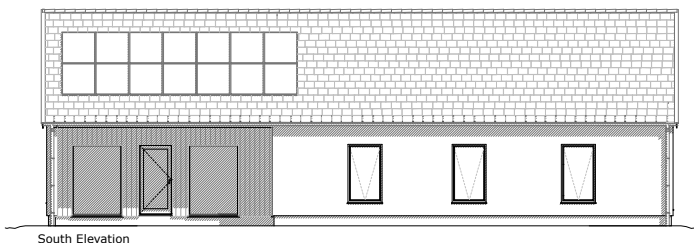
This featured design allows for 3 bedrooms plus an office/study.



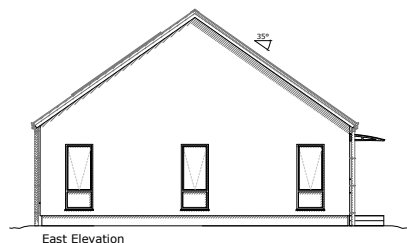
West Elevation



North Elevation



South Elevation



East Elevation