

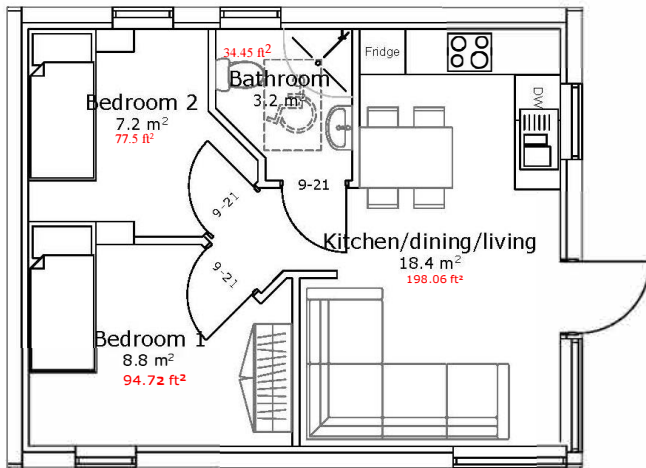


Passive House
($U_{wall}=0.15 \text{ W/m}^2\text{K}$, $U_{roof}=0.10 \text{ W/m}^2\text{K}$)

419.2 ft²

(Gross Internal Area)

drawing not to scale



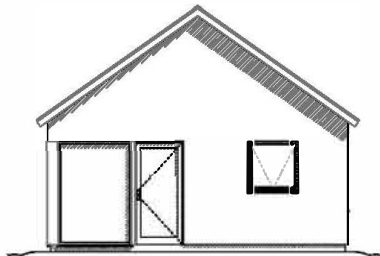
Internal dimensions*: 18 ft x 23 ft

External dimensions*: 20 ft x 25 ft

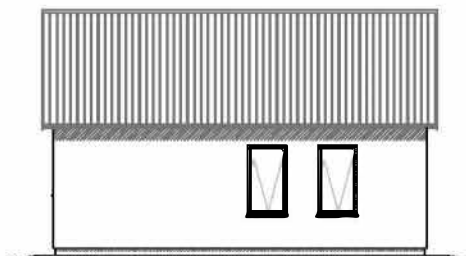
*dimensions converted from meters.

This sample model shows that even a very small house can be attractive and charming. The same house could also be built with a plaster finish and barged gables.

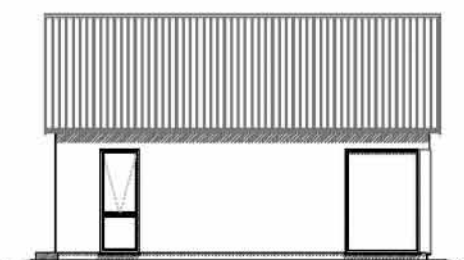
It can be used as a modest cottage with up to two bedrooms or as a holiday batch or granny flat.



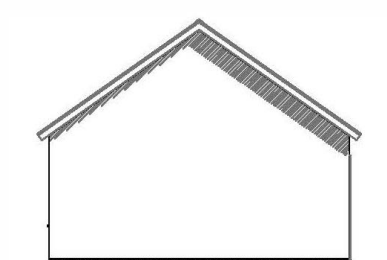
East Elevation



North Elevation



South Elevation



West Elevation